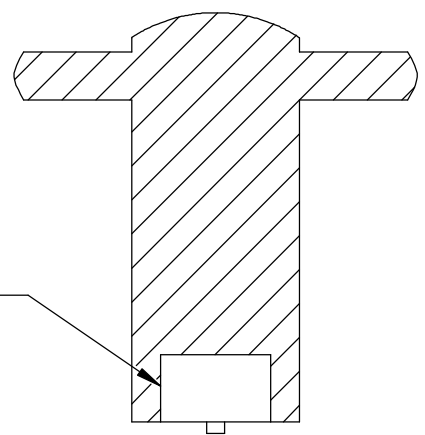


8 7 6 5 4 3 2 1

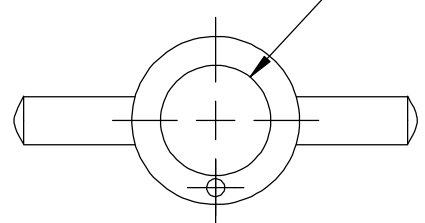
ENOUGH RELIEF
TO CLEAR BOLT
HEAD & WASHER



SECTION A-A

WASHER DIA PLUS .010"

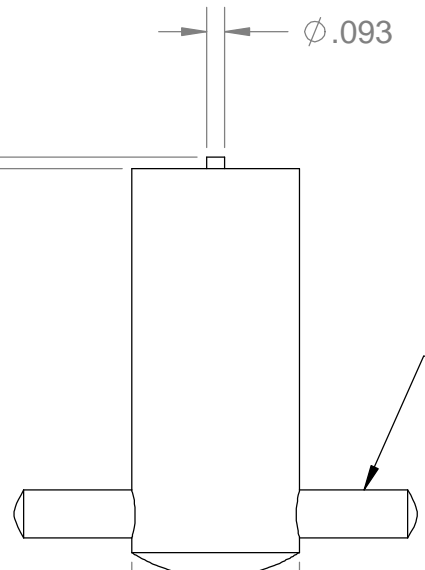
A



A

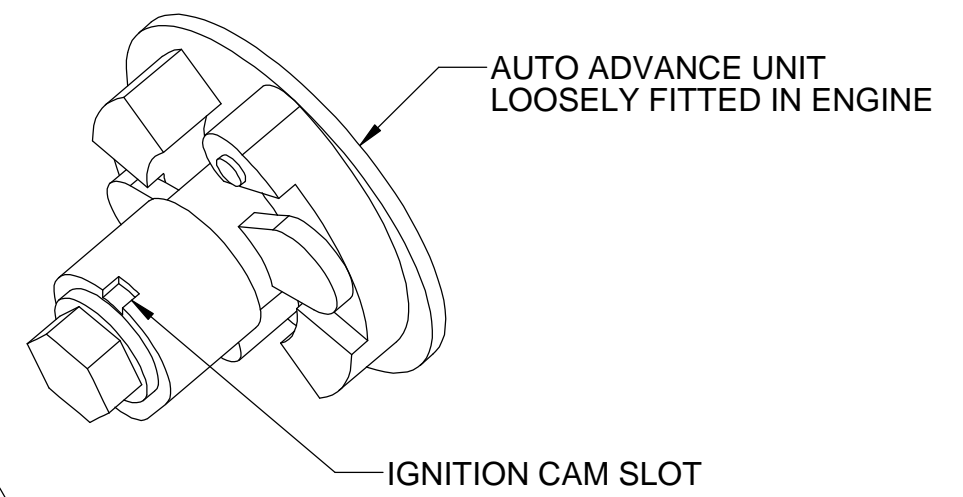
.060

$\phi .093$



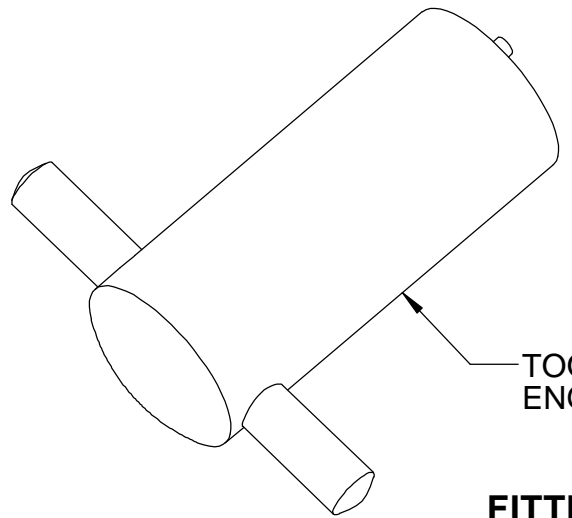
OPTIONAL T-HANDLE

$\phi 7/8$



AUTO ADVANCE UNIT
LOOSELY FITTED IN ENGINE

IGNITION CAM SLOT



TOOL POSITIONED TO
ENGAGE PIN INTO AAU

FITTING THE TOOL TO THE AAU

NOTES:

1. NORTON & BSA MOTORCYCLES HAVE NO KEY TO LOCATE THE AAU, THEREFORE A TOOL IS HANDY TO HELP RE-SET THE TIMING AFTER THE AUTO ADVANCE UNIT (AAU) HAS BEEN REMOVED
2. MACHINE A 7/8 BAR TO BARELY CLEAR THE AAU MOUNTING BOLT AND WASHER
3. INSTALL A 3/32 PIN IN THE MACHINED END OF THE TOOL
4. SET THE CRANKSHAFT AT THE FULL ADVANCE POSITION
5. FIT A TEST LAMP TO THE IGNITION POINTS
6. PRESENT THE TOOL TO THE AAU AND ENGAGE THE PIN WITH THE SLOT IN THE IGNITION CAM
7. WHEN THE ENGAGED TOOL IS TURNED IN THE COUNTER-CLOCKWISE DIRECTION THE IGNITION CAM WILL ROTATE TO THE FULL ADVANCE POSITION. ADDITIONAL PRESSURE IN THE CCW DIRECTION WILL ROTATE THE ENTIRE AAU ON ITS TAPER.
8. WHEN THE TEST LAMP INDICATES THE POINTS HAVE OPENED, STOP AND TIGHTEN THE CENTER BOLT TO 6 FT-LBS
9. CHECK TIMING AT FULL ADVANCE WITH A STROBE LAMP

UNLESS OTHERWISE SPECIFIED:		NAME	DATE	TITLE: BSA & NORTON AUTO ADVANCE AND TIMING TOOL	
DIMENSIONS ARE IN INCHES		DRAWN	RFW		12-17-11
TOLERANCES:		CHECKED			
FRACTIONAL \pm		ENG APPR.			
ANGULAR: MACH \pm BEND \pm		MFG APPR.			
TWO PLACE DECIMAL \pm		Q.A.			
THREE PLACE DECIMAL \pm		COMMENTS:			
INTERPRET GEOMETRIC TOLERANCING PER:					
MATERIAL					
FINISH					
DO NOT SCALE DRAWING		SIZE	DWG. NO.	REV	
		B	BSA AAU		
		SCALE: 1:1	WEIGHT:	SHEET 1 OF 1	

8 7 6 5 4 3 2 1